

1,000ft FROM  
PROJECT BEGIN

PROJECT BEGIN

50ft FROM  
PROPOSED ROW


Union Pacific Railroad  
BNSF Railroad

Mississippi River

E.H. CRUMP I/C PROJECT  
(UNDER CONSTRUCTION)

600ft FROM  
PROJECT END

PROJECT END

- |   |  |
|---|--|
|  Environmental Technical Study Area |  Proposed ROW       |
|  Parcel Boundary                    |  Existing ROW       |
|   |  Edge of Pavement   |
|   |  Project Centerline |

ARKANSAS  
CRITTENDEN COUNTY  
TENNESSEE  
SHELBY COUNTY

0 500 1,000 1,500 2,000  
Feet



**ENVIRONMENTAL TECHNICAL STUDY AREA**  
(Sheet 1 of 6)  
America's River Crossing Bridge Replacement  
PIN 132733.01

State of Tennessee  
Department of Transportation  
Crittenden County, Arkansas  
&  
Shelby County, Tennessee

1,000ft FROM  
PROJECT BEGIN

PROJECT BEGIN



Dacus Lake Rd

	Environmental Technical Study Area		Proposed ROW
	Parcel Boundary		Existing ROW
			Edge of Pavement
			Project Centerline



**ENVIRONMENTAL TECHNICAL STUDY AREA**  
(Sheet 2 of 6)

America's River Crossing Bridge Replacement  
PIN 132733.01

State of Tennessee  
Department of Transportation

Crittenden County, Arkansas  
&  
Shelby County, Tennessee

**BIG RIVER  
CROSSING TRAIL**

**BIG RIVER  
CROSSING TRAIL**

*Union Pacific Railroad*

*BNSF Railroad*

55

**50ft FROM  
PROPOSED ROW**

- |   |  |
|---|--|
|  Environmental Technical Study Area |  Proposed ROW       |
|  Parcel Boundary                    |  Existing ROW       |
|   |  Edge of Pavement   |
|   |  Project Centerline |

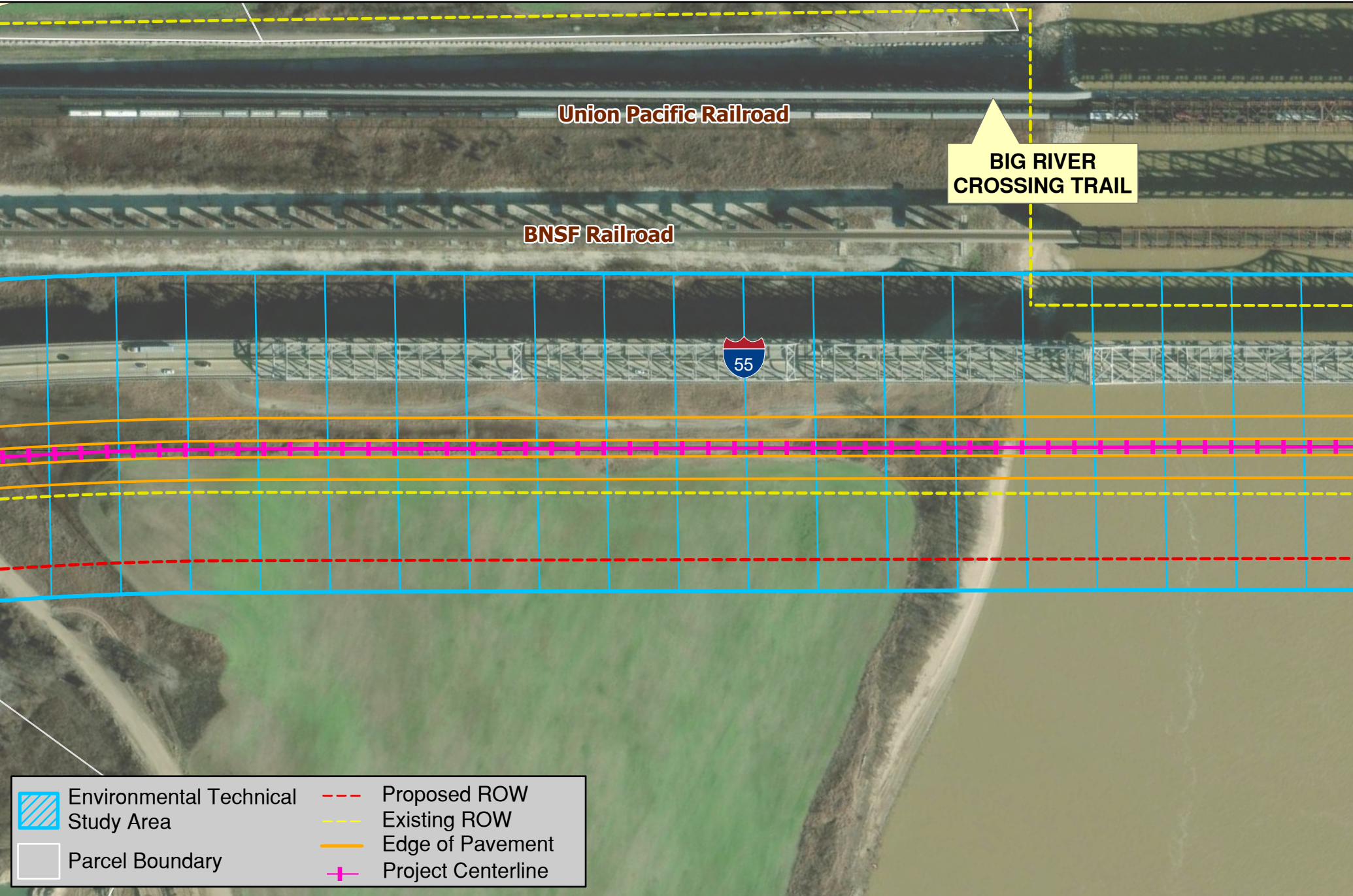


**ENVIRONMENTAL TECHNICAL STUDY AREA**  
(Sheet 3 of 6)

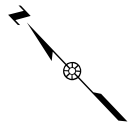
America's River Crossing Bridge Replacement  
PIN 132733.01

State of Tennessee  
Department of Transportation

Crittenden County, Arkansas  
&  
Shelby County, Tennessee



 Environmental Technical Study Area	 Proposed ROW
 Parcel Boundary	 Existing ROW
	 Edge of Pavement
	 Project Centerline

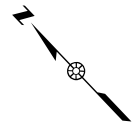
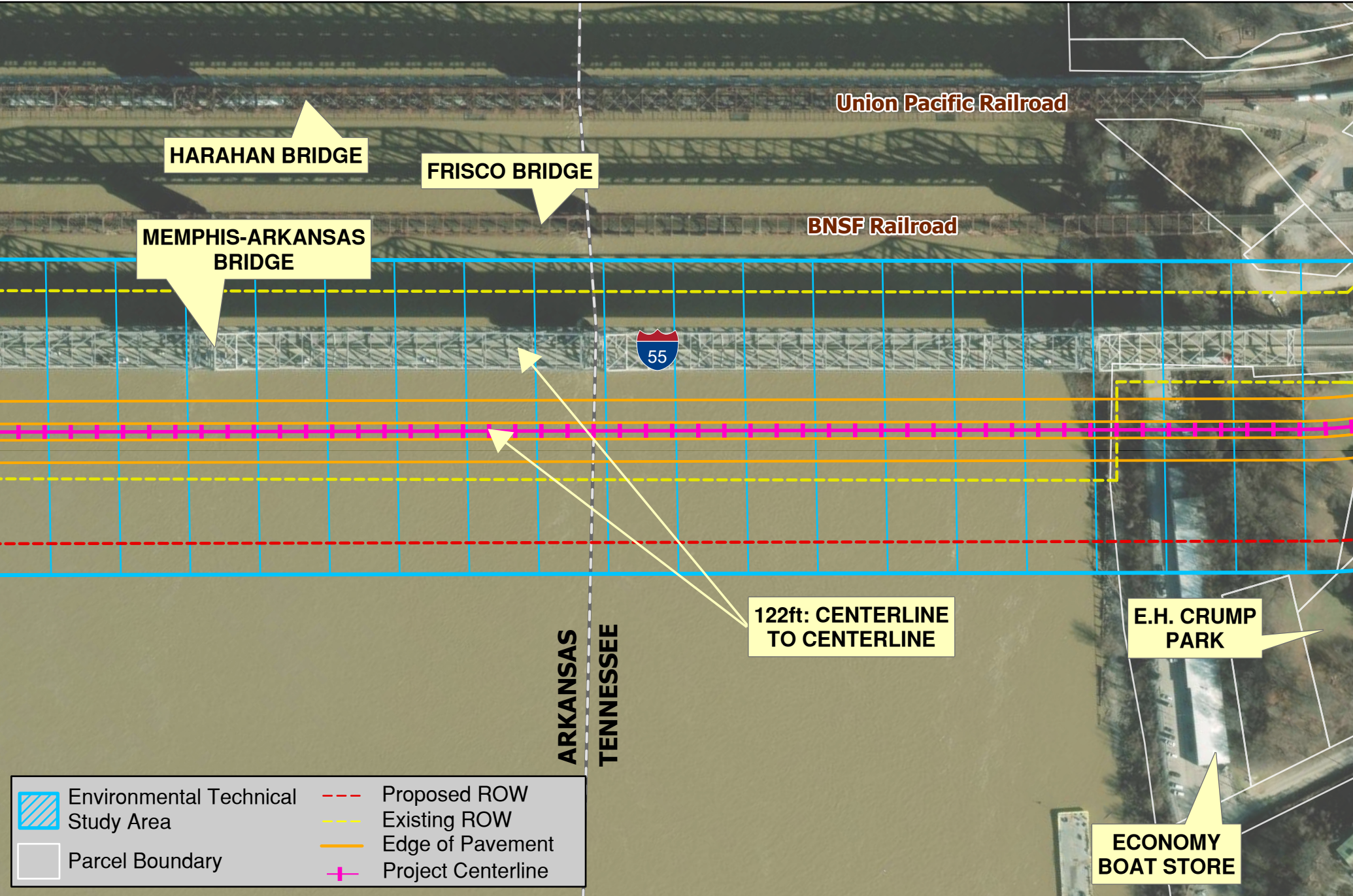


**ENVIRONMENTAL TECHNICAL STUDY AREA**  
(Sheet 4 of 6)

America's River Crossing Bridge Replacement  
PIN 132733.01

**State of Tennessee**  
**Department of Transportation**

Crittenden County, Arkansas  
&  
Shelby County, Tennessee



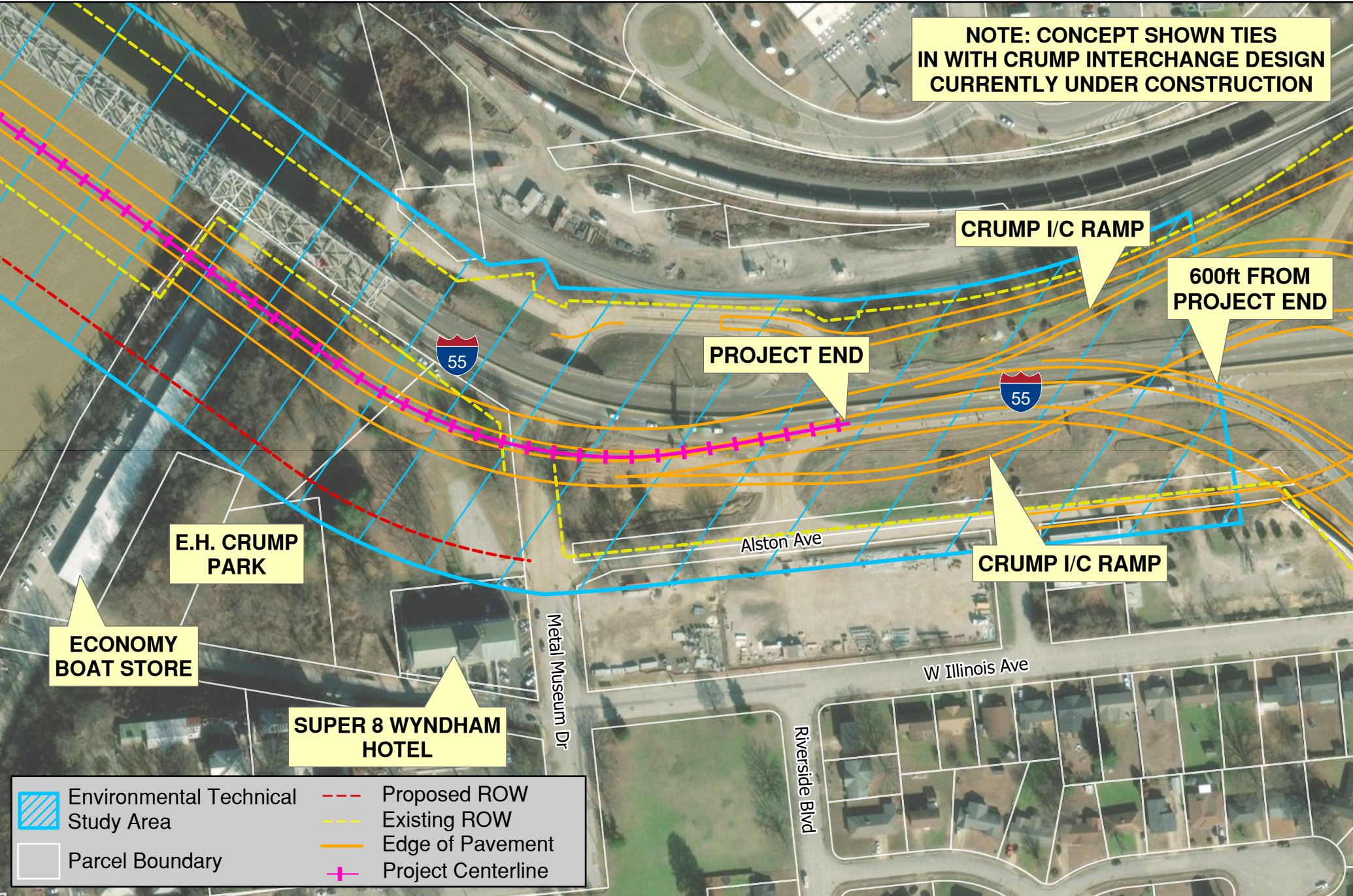
**ENVIRONMENTAL TECHNICAL STUDY AREA**  
(Sheet 5 of 6)

America's River Crossing Bridge Replacement  
PIN 132733.01

State of Tennessee  
Department of Transportation

Crittenden County, Arkansas  
&  
Shelby County, Tennessee

**NOTE: CONCEPT SHOWN TIES IN WITH CRUMP INTERCHANGE DESIGN CURRENTLY UNDER CONSTRUCTION**



0 100 200 300 400 500  
Feet



**ENVIRONMENTAL TECHNICAL STUDY AREA**  
(Sheet 6 of 6)

America's River Crossing Bridge Replacement  
PIN 132733.01

State of Tennessee  
Department of Transportation

Crittenden County, Arkansas  
&  
Shelby County, Tennessee